



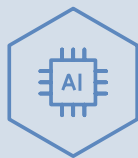
Exhaust air module **NIBE FLM S45**



The NIBE FLM S45 is an exhaust air module with built-in fan, specially designed for combining recycling of mechanical exhaust air with a NIBE ground source heat pump, providing an integrated solution for ventilation, hot water and heating.

The NIBE FLM S45 has a high fan capacity and low noise level. Energy is recovered from the ventilated air; even when the heat pump is not in operation. Energy is stored in the soil or rock collector, putting the exhaust air energy into maximum use.

The NIBE S Series is a natural part of your connected home. Smart technology adjusts the indoor climate automatically while you're in complete control from your phone or tablet. Giving maximum comfort and minimum energy consumption, while doing nature a favour at the same time.



- **Provides an integrated solution for ventilation, hot water and heating with ground source heat pumps.**
- **Efficient even when the heat pump is not in operation.**
- **A part of your energy-saving smart home in combination with a NIBE S series heat pump.**

Specifications NIBE FLM S45

NIBE FLM S45		
Supply voltage		230 V ~ 50 Hz
Driving power fan	W	175
Enclosure class		IP21
Maximum sound power level to ISO 12102	dB(A)	36-46
Ventilation max airflow	m ³ /h	350
Height / Width / Depth	mm	396 / 600 / 556
Weight	kg	35

Sustainable energy solutions

Since 1952, NIBE has been manufacturing energy-efficient and sustainable climate solutions for your home. It all started in Markaryd in Sweden and we value our Nordic heritage by harnessing the power of nature. We combine renewable energy with smart technology in order to offer effective solutions so that together we can build a more sustainable future.

Whether it's a chilly winter's day or a hot summer's afternoon, we need a well-balanced indoor climate for a comfortable everyday life, whatever the weather. Our wide range of products supplies your home with cooling, heating, ventilation and hot water, so that you can create a pleasant indoor climate with a low impact on nature.

